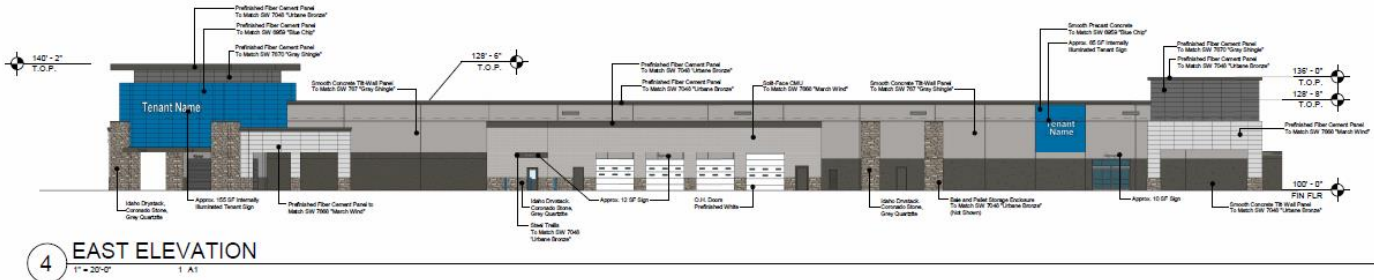
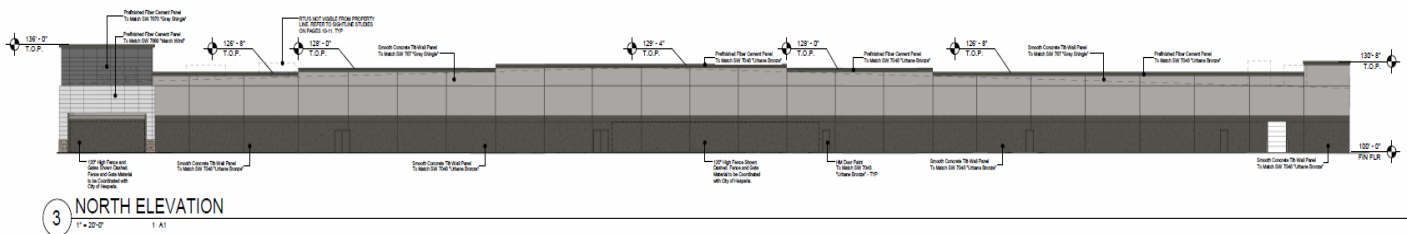


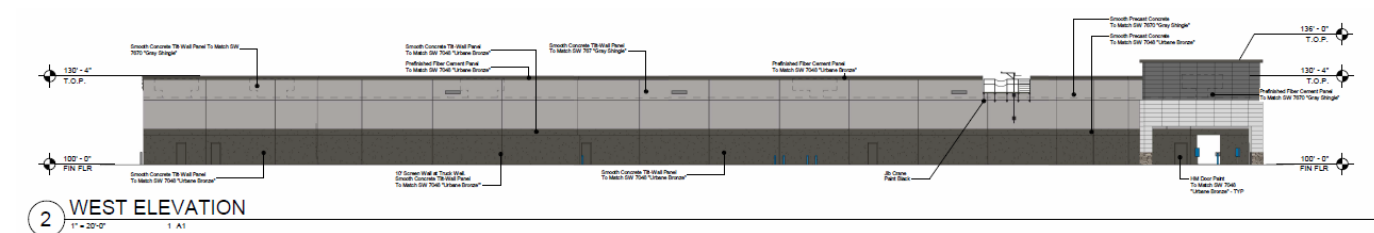
ATTACHMENT 6



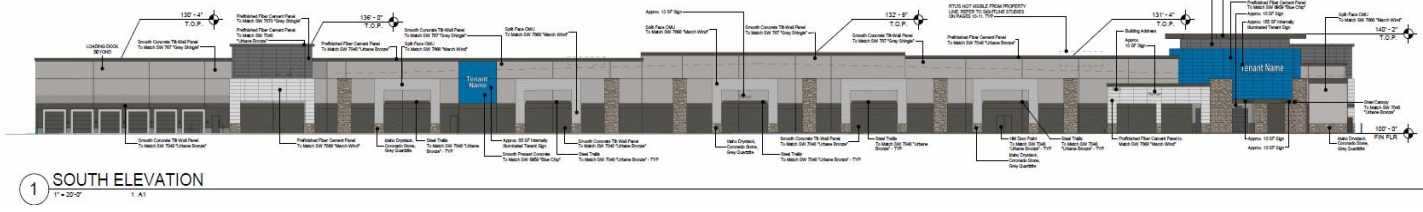
4 EAST ELEVATION
1" = 20'-0"



3 NORTH ELEVATION
1" = 20'-0"



2 WEST ELEVATION
1" = 20'-0"



1 SOUTH ELEVATION
1" = 20'-0"

APPLICANT(S): KIMLEY-HORN

FILE NO(S): CUP24-00005

LOCATION: NORTH AND SOUTH OF AMARGOSA ROAD, SOUTH OF THE CALIFORNIA AQUEDUCT, EAST OF KEY POINTE DRIVE AND WEST OF THE I-15 FREEWAY

APN(S): 0405-062-72, -73 & 3064-481-25

PROPOSAL: CONSIDERATION OF CONDITIONAL USE PERMIT (CUP24-00005) TO CONSTRUCT A 165,111 SQUARE FOOT RETAIL AND GROCERY STORE BUILDING WITH ALCOHOL SALES FOR OFF-SITE CONSUMPTION AND A TIRE CENTER. INCLUDING THE CONSTRUCTION OF A GAS STATION WITH 14 FUEL PUMPS (28 FUEL POSITIONS) AND A 2,623 SQUARE FOOT AUTOMATED CARWASH ON 25.4 ACRES WITHIN THE REGIONAL COMMERCIAL (RC) ZONE OF THE MAIN STREET AND FREEWAY CORRIDOR SPECIFIC PLAN IN CONJUNCTION WITH THE ADOPTION OF AN ENVIRONMENTAL IMPACT REPORT PURSUANT TO THE PROVISIONS OF CEQA



ELEVATIONS (1)