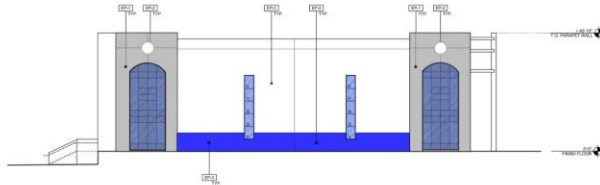


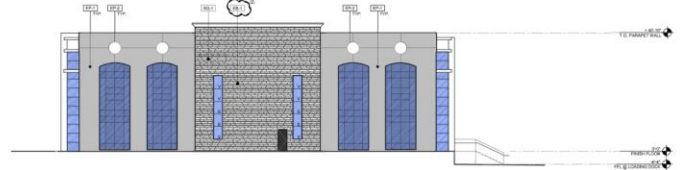
ATTACHMENT 4



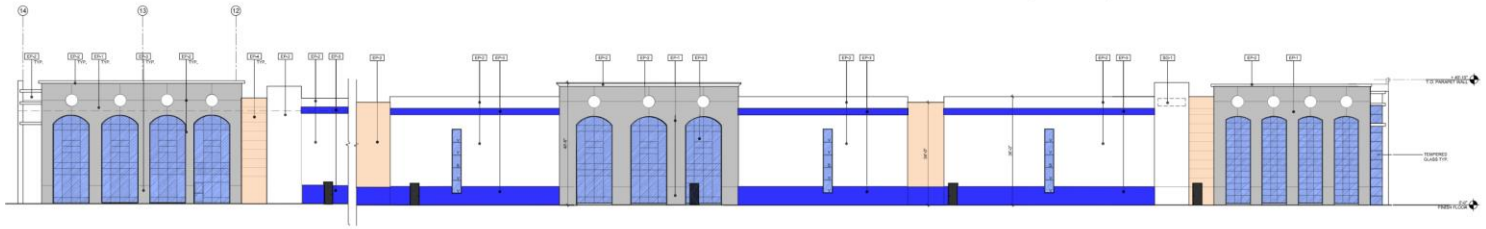
BUILDING - 01 _ WEST ELEVATION (LOADING DOCK)
BUILDING - 02 (SIMILAR)



BUILDING - 01 _ SOUTH ELEVATION
BUILDING - 02 (SIMILAR)



BUILDING - 01 _ NORTH ELEVATION
BUILDING - 02 (SIMILAR)



BUILDING - 01 _ EAST ELEVATION (OFFICE) BUILDING - 02 (SIMILAR)

LEGEND - EXTERIOR FINISHES	
EP-1	CONCRETE TILT-UP PAINTED BY "DUAN EDWARDS" INDUSTRIAL AGE DET119
EP-2	CONCRETE TILT-UP PAINTED BY "DUAN EDWARDS" WARM WHITE DET180
EP-3	CONCRETE TILT-UP PAINTED BY "DUAN EDWARDS" INKNO NIGHT DET138
EP-4	CONCRETE TILT-UP PAINTED BY "DUAN EDWARDS" SAND DOLLAR DET171
SC-1	SKINAGE UNDER SEPARATE PERMIT
ST-1	STONE VENEER - CORONADO PRAIRIE STONE - MOCHA GRANITE

APPLICANT(S):
CARGO SOLUTIONS EXPRESS

FILE NO(S):
CUP22-00016 & TPM24-00003

LOCATION:
SOUTHEAST CORNER OF THREE FLAGS ROAD AND POPLAR STREET.

APNs:
3064-591-12,13,17,18, and 3064-631-01

PROPOSAL:
CONSIDERATION OF CONDITIONAL USE PERMIT CUP22-00016 TO CONSTRUCT TWO 75,894 SQUARE FOOT WAREHOUSES WITH ONSITE TRUCK STORAGE AND TRACTOR STALLS ON 20.3 GROSS ACRES IN CONJUNCTION WITH TENTATIVE PARCEL MAP NO. 20883 (TPM24-00003) TO CONSOLIDATE 5 PARCELS INTO TWO PARCELS WITHIN THE COMMERCIAL INDUSTRIAL BUSINESS PARK ZONE OF THE MAIN STREET AND FREEWAY CORRIDOR SPECIFIC PLAN

COLOR ELEVATION