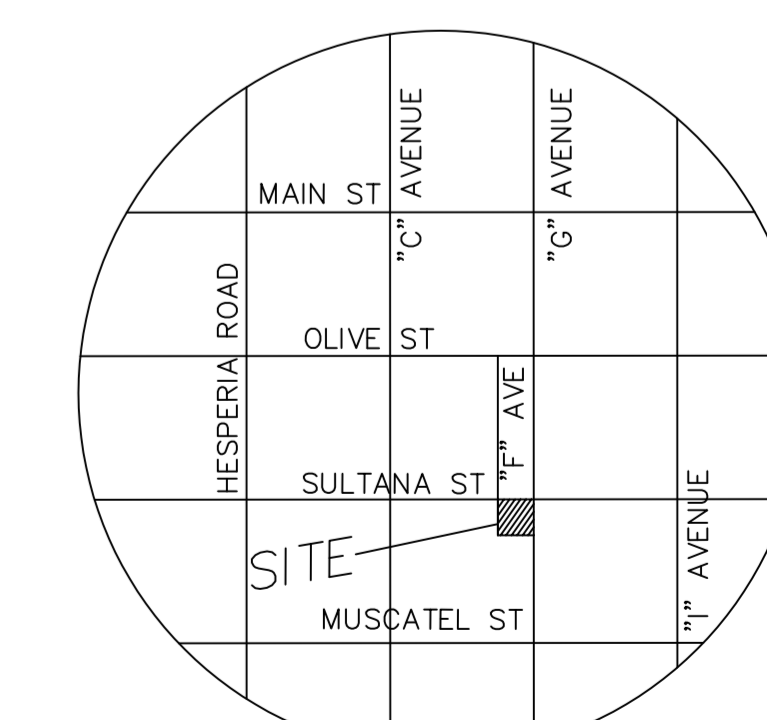
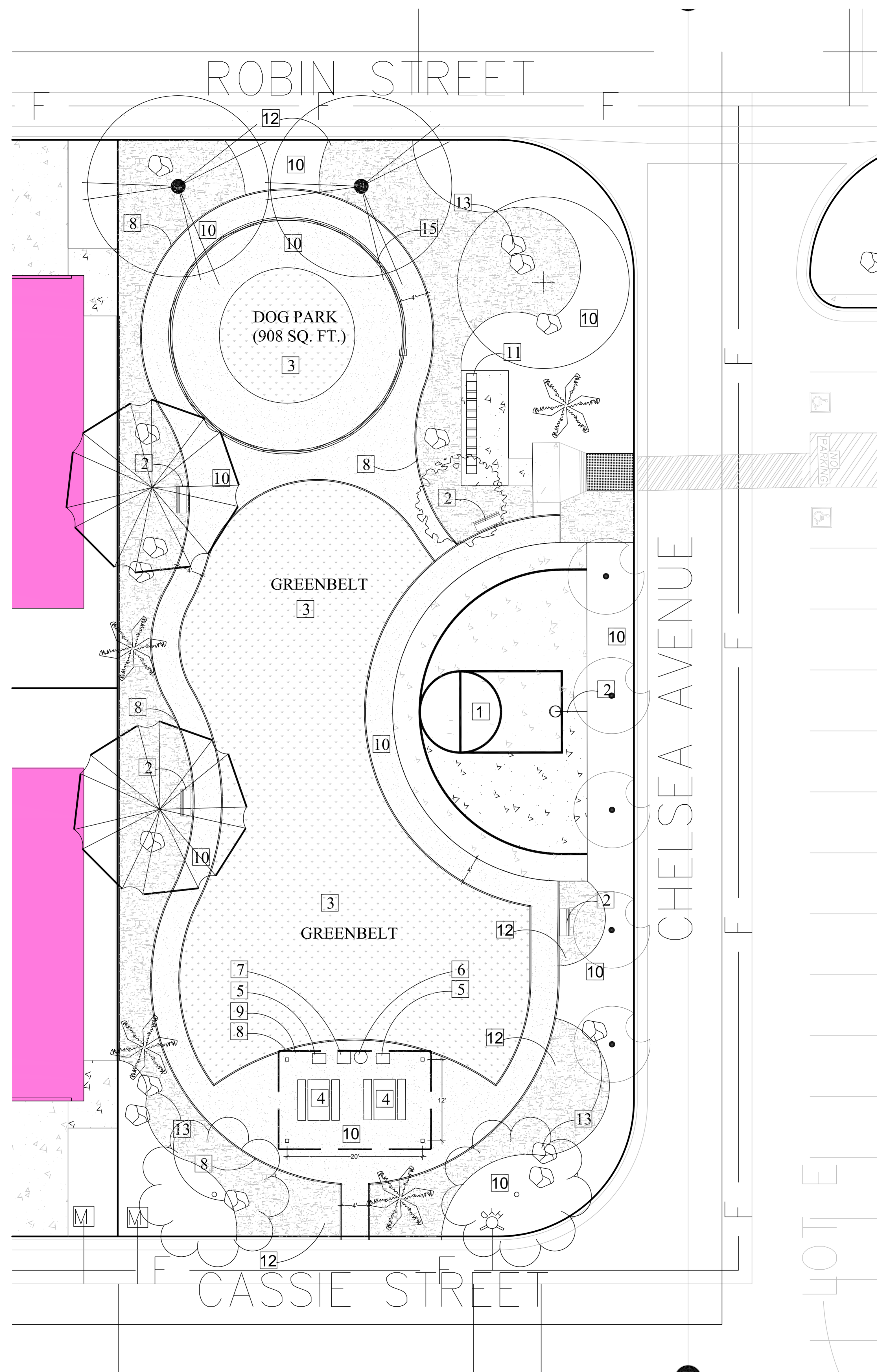


CONSTRUCTION LEGEND	
1	4" THICK NATURAL GRAY CONCRETE W BASKETBALL COURT LINES
2	BENCH (COLOR T.B.S.BY OWNER)
3	GRASS OR TURF
4	PICNIC TABLE
5	STANDARD STOVE GRILL
6	HOT COAL TRASHCAN
7	TRASHCAN
8	TAN SYNTHETIC BENDER BOARD
9	LATTICE COVER (PER SEPARATE PERMIT)
10	TAN DECOMPOSED GRANITE
11	CLUSTER MAILBOX
12	DECORATIVE ROCK
13	BOULDERS
14	BASKETBALL HOOP
15	WROUGHT IRON FENCING AROUND DOG RUN W/ GATES



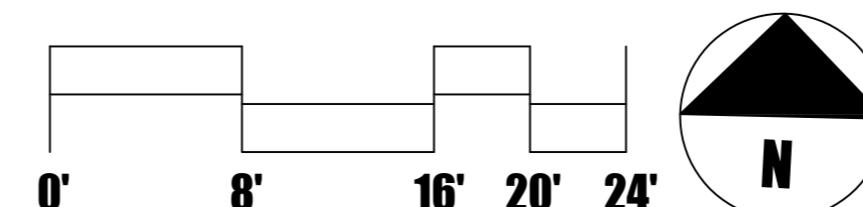
VICINITY MAP N.T.S.

**TOWNHOME DEVELOPMENT  
TRACT MAP 20581**  
CITY OF HESPERIA, SAN BERNARDINO, CA

OWNER/ DEVELOPER  
VISTA PACIFIC HOMES  
ADAM CASTANEDA  
15550 MAIN STREET C-11  
HESPERIA, CALIFORNIA 92345  
1-909-578-2119

ARCHITECT  
ARCHITeYk  
29222 DAKOTA DRIVE  
VALENCIA, CA 91354  
949-939-1310

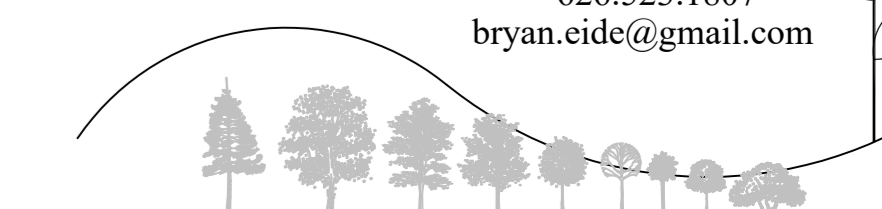
CIVIL ENGINEER  
ALTEC ENGINEERING CORP.  
19531 HIGHWAY 18  
APPLE VALLEY, CA 92307  
760-242-9900



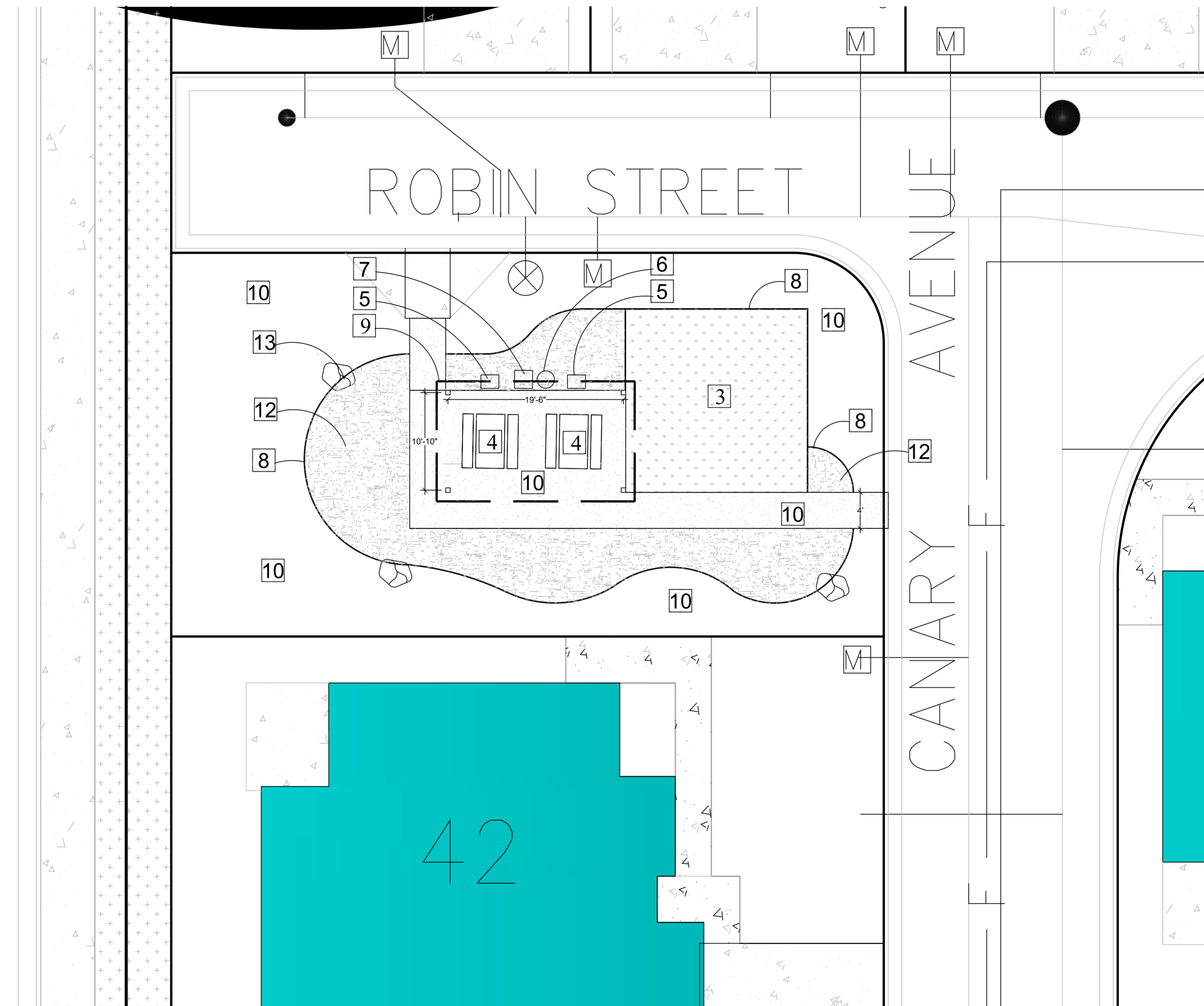
May 10, 2026

**Landscape Concept Plan Sheet 1**

**BGE** Landscape  
**DESIGN**  
Serving Southern California  
626.523.1807  
bryan.cide@gmail.com



CONSTRUCTION LEGEND	
3	GRASS OR TURF
4	PICNIC TABLE
5	STANDARD STOVE GRILL
6	HOT COAL TRASHCAN
7	TRASHCAN
8	TAN SYNTHETIC BENDER BOARD
9	LATTICE COVER (PER SEPARATE PERMIT)
10	TAN DECOMPOSED GRANITE
12	DECORATIVE ROCK
13	BOULDERS

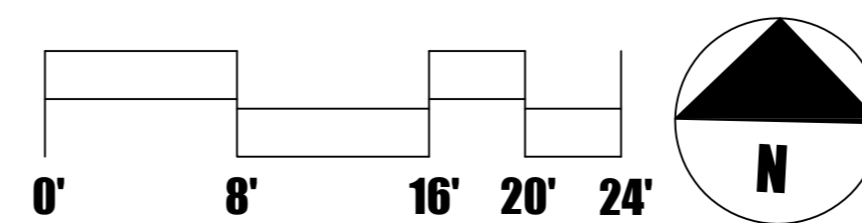


**TOWNHOME DEVELOPMENT  
TRACT MAP 20581**  
CITY OF HESPERIA, SAN BERNARDINO, CA

**OWNER/ DEVELOPER**  
VISTA PACIFIC HOMES  
ADAM CASTANEDA  
15550 MAIN STREET C-11  
HESPERIA, CALIFORNIA 92345  
1-909-578-2119

**ARCHITECT**  
ARCHITeK  
29222 DAKOTA DRIVE  
VALENCIA, CA 91354  
949-939-1310

**CIVIL ENGINEER**  
ALTEC ENGINEERING CORP.  
19531 HIGHWAY 18  
APPLE VALLEY, CA 92307  
760-242-9900



May 10, 2026

**Landscape Concept Plan Sheet 2**

**BGE** Landscape  
**DESIGN**  
Serving Southern California  
626.523.1807  
bryan.eide@gmail.com



**N.O.F. Inc.**



**6' Traditional Bench with Back - Inground Mount.**

- Available in 6' and 8' lengths
- 35 1/8" H x 23 7/16" D, 17 1/16" Seat height.
- (8) 2" x 4" Slats.
- 3" x 3" Square all MIG welded frame.
- Frame available with galvanized or powder coated finish.
- Available in surface and inground mount.
- Available in Untreated Pine, Treated Pine, Redwood Stained Pine and Aluminum Planks.
- Some assembly required.
- Item #: US 9821G

Model Number	Description
US 9821G-U6	6' Park Bench, 118 Lbs., Untreated Pine, Inground Mount.
US 9821G-PT6	6' Park Bench, 120 Lbs., Treated Pine, Inground Mount.
US 9821G-T6	6' Park Bench, 118 Lbs., Redwood Stained Pine, Inground Mount.
US 9821G-US	8' Park Bench, 148 Lbs., Untreated Pine, Inground Mount.
US 9821G-PT8	8' Park Bench, 158 Lbs., Treated Pine, Inground Mount.
US 9821G-T8	8' Park Bench, 148 Lbs., Redwood Stained Pine, Inground Mount.

**FRAME STYLES**

**Powder Coat Colors**

2 BENCH

**GameTime** Aluminum Slat Picnic Table



**Features and Benefits:**

- 1.58" galvanized pipe frame
- 11 gauge galvanized steel table angle bracket
- 1.5/16" galvanized pipe diagonal brace
- 14 gauge anodized aluminum seat and top extension
- Anodized Aluminum End Claps
- Galvanized or powder coat finish
- High quality, durable hardware
- Available for portable mounting
- Extended...

Model: 677

Limited Lifetime Warranty on uprights, hardware and connections. Visit [gametime.com/warranty](http://gametime.com/warranty) for full warranty information.

4 PICNIC TABLE

**GameTime** Standard Stove Grill



**Features and Benefits:**

- Die formed 11 gauge galvanized fire box
- Cooking unit pivots 360 degrees to provide proper draft at all times
- Three position adjustable grate rivets to fire box
- 240 square inches of cooking surface
- 2-3/8" O.D. galvanized pipe support post
- Galvanized and black (grate) finish
- High quality, durable...

Model: 51

Limited Lifetime Warranty on uprights, hardware and connections. Visit [gametime.com/warranty](http://gametime.com/warranty) for full warranty information.

5 BBQ GRILL

**Product Information** TF1131



**Size:** 26.2" Dia. x 38.5" H

**Weight:** 580 Lbs.

**Capacity:** 53 Gallons

**Material:** Reinforced concrete Steel

**Reinforcing:** 1/4" Dia. steel rebar

**Parts:** 1 Metal grate (TF9008)  
1 Concrete base (TF1871)

**Finish Options**

**Standard**  
-Exposed Aggregate(A)  
-Weatherstone(B)

**Premium**  
-Weatherstone/Exposed Glass(C)  
-Granitex(GT)

**TRASHCANS UNLIMITED**  
THE BEST TRASHCANS AT THE BEST PRICES

Trashcans Unlimited | [www.trashcansunlimited.com](http://www.trashcansunlimited.com) | [sales@trashcansunlimited.com](mailto:sales@trashcansunlimited.com) | P: 844-TRASHCANS

6 HOT COALS

**Square StoneTec® with Dome Lid**

Item#: 72041199 - Grey w/ Ashstone Panels  
72041399 - Black w/ Peppercorn Panels  
72041599 - Beige w/ Riverstone Panels  
72041699 - Beige w/ Sedona Panels  
72041499 - Black w/ Sedona Panels  
72045299 - Black w/ Riverstone Panels  
72043099 - Blue w/ Ashstone Panels  
72045599 - Brown w/ Riverstone Panels  
72045499 - Forest Green w/ Riverstone Panels



Unit Size	Capacity	Weight	Material Process: Blow-Molded with HDPE
18 1/2" W x 18 1/2" L x 41 1/2" H	42 Gallons	85 lbs.	Standard Inclusions: Set of (4) 11 1/2" W x 15 1/2" H panels

Unit Size: 18 1/2" W x 18 1/2" L x 41 1/2" H  
Capacity: 42 Gallons  
Weight: 85 lbs.

Material Process: Blow-Molded with HDPE  
Standard Inclusions: Set of (4) 11 1/2" W x 15 1/2" H panels

Carton Size: 19" x 20" W x 33" H  
# Cartons Shipped: (2) via UPS  
Dimensional Wt.: Ctn1 - 80 lbs  
Carton Wt.: Ctn1 - 80 lbs  
Ctn2 - 35 lbs  
Ctn2 - 8 lbs

Covered dome lid allows for easy access on all four sides. Receptacles perform well both indoors and outdoors. Panels are made using real stone for an attractive, upscale receptacle with extended durability.

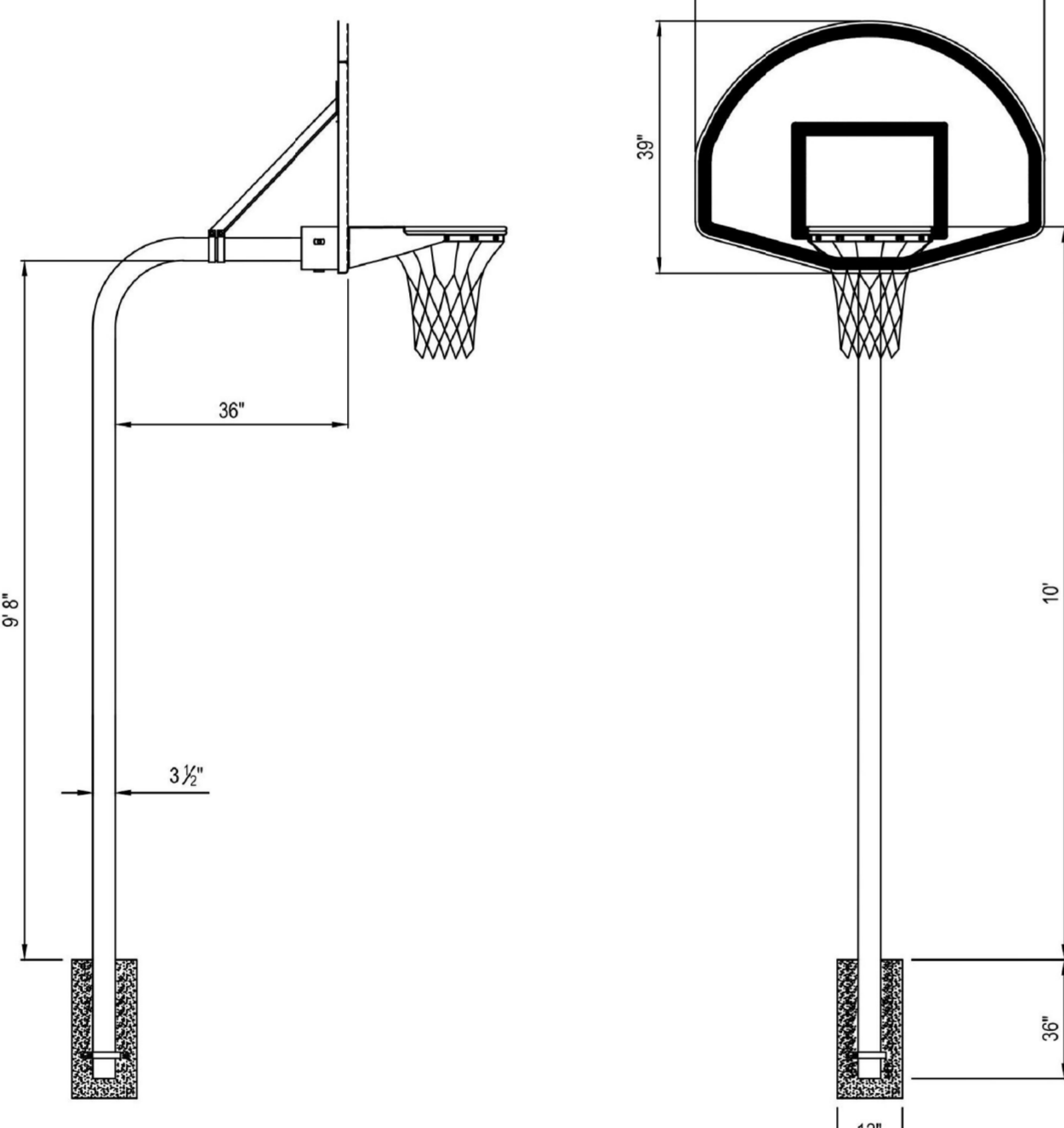
- Smooth surface of the StoneTec panels are easy to keep clean
- Generous 42-gallon trash capacity, uses 45 gallon trash bags and is perfect for high traffic areas
- Large 12.25" x 6" openings on all four sides allow for convenient disposal
- Lid fits snug to base and lifts off for easy trash removal. Trash receptacle includes patented Grab Bag™ system and additional routed openings to secure trash bag in place
- Waste container\* molded from high density polyethylene with PCR and panels made from durable, fiberglass-reinforced polymer formula
- Dome-shaped lid discourages the placement of garbage on top of unit and prevents rainwater from collecting in waste container
- Panels add approximately 40 lbs to the receptacle for greater stability
- Ships in two cartons; minimal assembly required
- 1-year warranty
- Made in the U.S.A.

Trashcans Unlimited | [www.trashcansunlimited.com](http://www.trashcansunlimited.com) | [sales@trashcansunlimited.com](mailto:sales@trashcansunlimited.com) | P: 800-279-3615

7 TRASHCAN

**PRODUCT SPECIFICATION**

PR20 TOUGH-DUTY STEEL FAN GOOSENECK PLAYGROUND SYSTEM



Pole shall be constructed of 3 1/2" outside diameter RS40 flow coated galvanized steel tubing with an 8 ga. wall thickness. Design shall be a bent gooseneck style and allow for a 30" bury into the ground and a 30" extension from the front of the pole to the face of the backboard. Two 1" 5/8" diameter 13 ga. flow coated galvanized tubular braces shall support the top of the backboard and connect directly to the pole. Pole shall be designed so that the rim mounts directly to the horizontal pole section through the backboard to eliminate stress on the backboard during play. Pole systems without backboard support braces shall not be considered equal. Pole shall carry a minimum 10-year limited warranty. Backboard shall be constructed of formed and welded steel with a 39" x 54" fan-shaped playing surface. Skin shall be 12 ga. mild steel and support structure shall be 7 ga. and 10 ga. All skin edges shall be formed to create a 1 1/2" lip to aid strength. The backboard shall be coated with a white polyester powder coated finish and have an official orange shooter's square and border. Backboard shall accept rims with a 5' x 5' hole pattern and be manufactured in the USA. Backboard shall carry a minimum 10-year limited warranty. Rim shall be constructed of an official size 50" diameter AISI 1018 cold drawn carbon steel ring with continuous wire formed necklets to accept nylon net (included). Backplate shall be a minimum 3/16" thick. Rim shall be supported by a 1/2" diameter steel brace. Mounting hardware shall be included. Rim shall carry a 1-year limited warranty, have an orange powder coated finish and be made in the USA. Installation to be completed in accordance with manufacturer's instructions. Do not scale drawings. Entire system shall weigh 216#.

MANUFACTURED BY BISON, INC. • 603 L STREET, LINCOLN, NEBRASKA, 68508 • WWW.BISONINC.COM • 402-474-3353  
PROTECTED BY COPYRIGHT • ALL RIGHTS RESERVED • SUBJECT TO CHANGE WITHOUT NOTICE • REVISED 03/05/2015

14 BASKETBALL HOOP



10 DECOMPOSED GRANITE



12 DECORATIVE ROCK



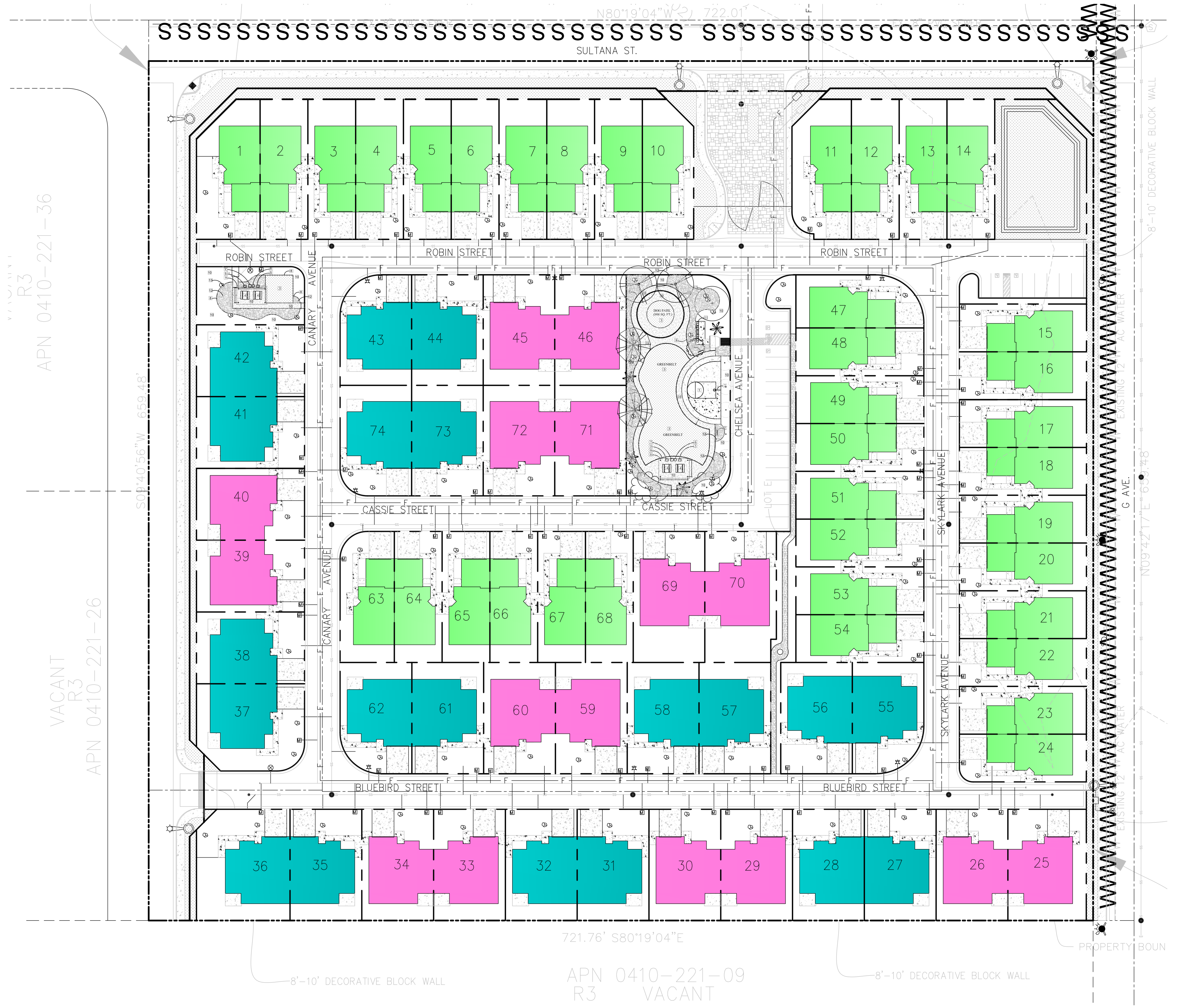
11 MAILBOX CLUSTERS



13 BOULDERS

CONSTRUCTION LEGEND

1	4" THICK NATURAL GRAY CONCRETE W BASKETBALL COURT LINES
2	BENCH (COLOR T.B.S.BY OWNER)
3	GRASS OR TURF
4	PICNIC TABLE
5	STANDARD STOVE GRILL
6	HOT COAL TRASHCAN
7	TRASHCAN
8	TAN SYNTHETIC BENDER BOARD
9	LATTICE COVER (PER SEPARATE PERMIT)
10	TAN DECOMPOSED GRANITE
11	CLUSTER MAILBOX
12	DECORATIVE ROCK
13	BOULDERS
14	BASKETBALL HOOP
15	WROUGHT IRON FENCING AROUND DOG RUN W/ GATES

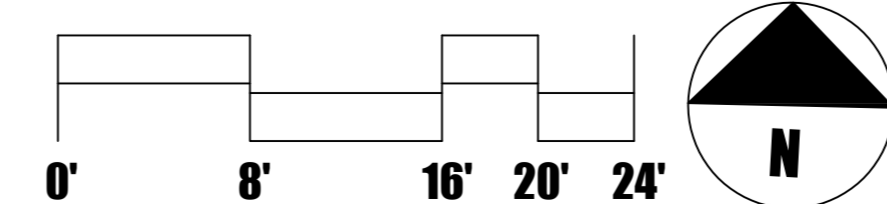


TOWNHOME DEVELOPMENT  
TRACT MAP 20581  
CITY OF HESPERIA, SAN BERNARDINO, CA

OWNER/ DEVELOPER  
VISTA PACIFIC HOMES  
ADAM CASTANEDA  
15550 MAIN STREET C-11  
HESPERIA, CALIFORNIA 92345  
1-909-578-2119

ARCHITECT  
ARCHITeak  
29222 DAKOTA DRIVE  
VALENCIA, CA 91354  
949-939-1310

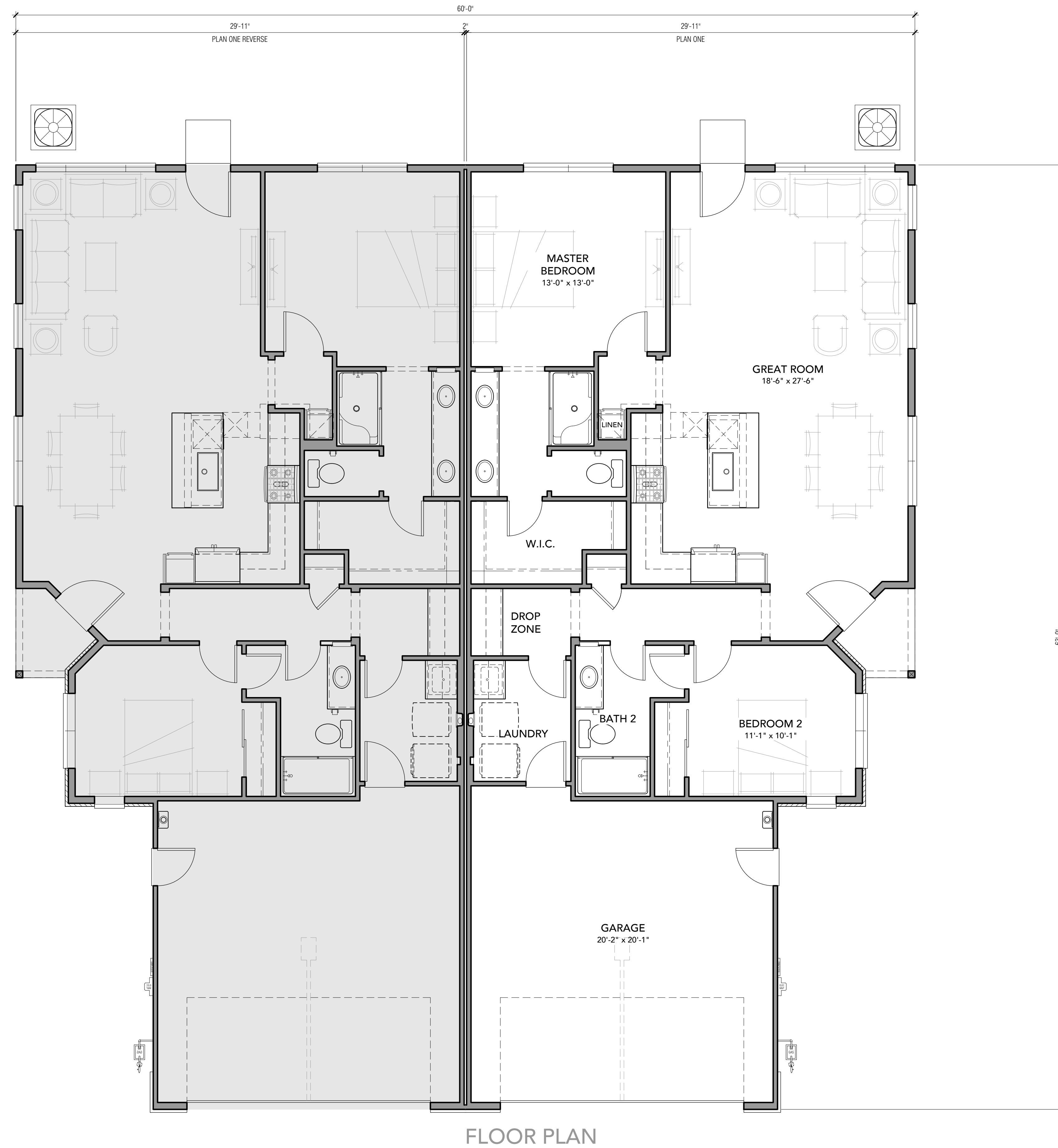
CIVIL ENGINEER  
ALTEC ENGINEERING CORP.  
19531 HIGHWAY 18  
APPLE VALLEY, CA 92307  
760-242-9900



May 10, 2026

Landscape Concept Plan Sheet 4

**BGE** Landscape DESIGN  
Serving Southern California  
626-523-1807  
bryan.cide@gmail.com



PLAN 1211	
AREA TABULATION	
TOTAL CONDITIONED	1211 SF
UNCONDITIONED SPACE	
GARAGE	434 SF
COVERED PORCH	24 SF
TOTAL UNCONDITIONED	458 SF



JOB NO.	VP-22-01
SHEET NO.	<b>A1.1.1</b>
DATE	230221

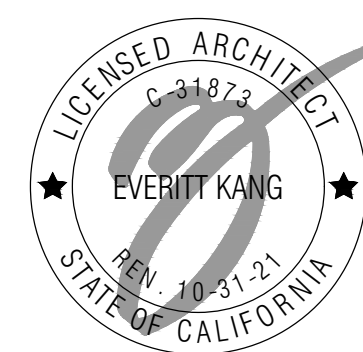


FLOOR PLAN

PLAN 1620	
AREA TABULATION	
TOTAL UNCONDITIONED:	1620 SF
UNCONDITIONED SPACE:	433 SF
GARAGE:	30 SF
COVERED PORCH:	106 SF
TOTAL UNCONDITIONED:	569 SF

0 4 8 12

ARCHITEYK



APPLICANT  
**PARK VIEW TRAILS, LLC**  
 15550 MAIN STREET, SUITE C-11  
 HESPERIA, CA 92345  
 909.578.2119

PROJECT

**PARK VIEW TRAILS**  
 TRACT 20581, HESPERIA, CALIFORNIA

DRAWINGS

**PLAN TWO**  
 BUILDING PLAN  
 DUPLEX CONFIGURATION 'A'

JOB NO.	VP-22-01
SHEET NO.	<b>A2.1.1</b>
DATE	230221

29222 DAKOTA DRIVE  
 VALENCIA CALIFORNIA 91354  
 949 939 1310  
 www.architeyk.com



PLAN 1620	
AREA TABULATION	
TOTAL CONDITIONED:	1620 SF
UNCONDITIONED SPACE:	
GARAGE:	433 SF
COVERED PORCH:	30 SF
COVERED PATIO:	106 SF
TOTAL UNCONDITIONED:	569 SF

0 4 8 12

**ARCHIT EYK**

29222 DAKOTA DRIVE  
VALENCIA CALIFORNIA 91354  
949 939 1310  
www.architeyk.com

APPLICANT

**PARK VIEW TRAILS, LLC**

15550 MAIN STREET, SUITE C-11  
HESPERIA, CA 92345  
909.578.2119

PROJECT

**PARK VIEW TRAILS**

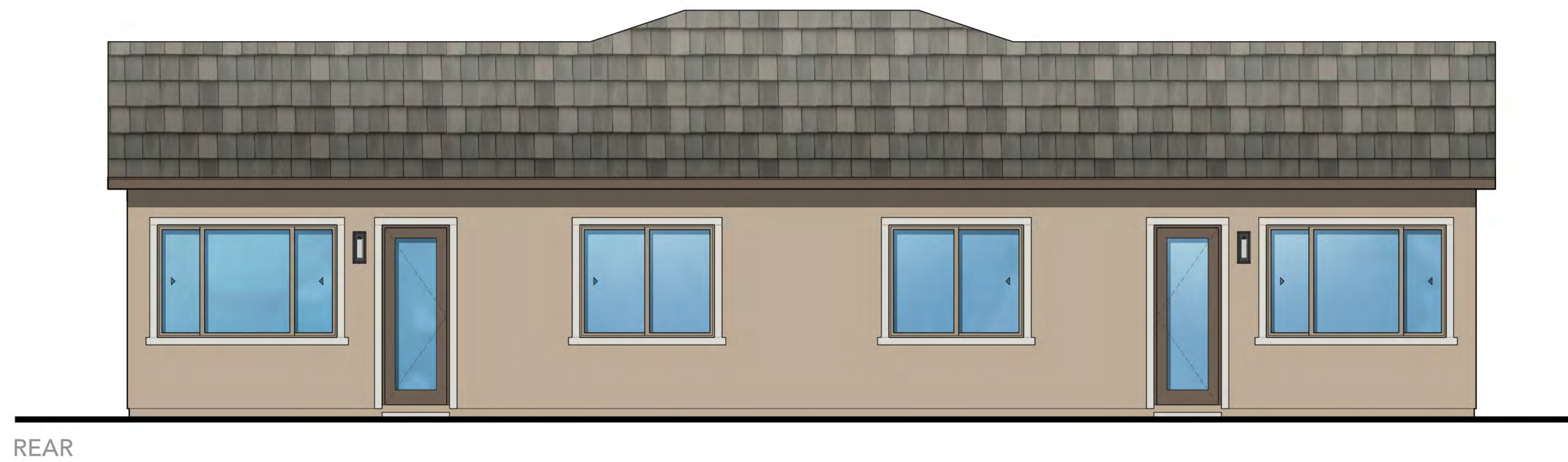
TRACT 20581, HESPERIA, CALIFORNIA

DRAWINGS

**PLAN TWO**

BUILDING PLAN  
DUPLIX CONFIGURATION 'B'

JOB NO.	VP-22-01
SHEET NO.	<b>A3.1.1</b>
DATE	230221



REAR



ENTRY SIDE



FRONT

COLOR SCHEME 1

0 4 8 12

ARCHITEYK



29222 DAKOTA DRIVE  
VALENCIA CALIFORNIA 91354  
949 939 1310  
www.architeyk.com



APPLICANT

**PARK VIEW TRAILS, LLC**  
15550 MAIN STREET, SUITE C-11  
HESPERIA, CA 92345  
909.578.2119

PROJECT

**PARK VIEW TRAILS**  
TRACT 20581, HESPERIA, CALIFORNIA

DRAWINGS

**PLAN ONE**  
MEDITERRANEAN ELEVATION

JOB NO.	VP-22-01
SHEET NO.	<b>A1.2.1A</b>
DATE	260401



REAR



ENTRY SIDE



FRONT

COLOR SCHEME 2

ARCHITEYK



29222 DAKOTA DRIVE  
VALENCIA CALIFORNIA 91354  
949 939 1310  
www.architeyk.com



APPLICANT  
**PARK VIEW TRAILS, LLC**  
15550 MAIN STREET, SUITE C-11  
HESPERIA, CA 92345  
909.578.2119

PROJECT

**PARK VIEW TRAILS**  
TRACT 20581, HESPERIA, CALIFORNIA

DRAWINGS

**PLAN ONE**  
ITALIANATE ELEVATION

0 4 8 12

JOB NO.	VP-22-01
SHEET NO.	<b>A1.2.2A</b>
DATE	260401



REAR



SIDE



FRONT

COLOR SCHEME 3

0 4 8 12

ARCHITEYK



APPLICANT

PARK VIEW TRAILS, LLC

15550 MAIN STREET, SUITE C-11  
 HESPERIA, CA 92345  
 909.578.2119

PROJECT

**PARK VIEW TRAILS**  
 TRACT 20581, HESPERIA, CALIFORNIA

DRAWINGS

**PLAN TWO**  
 MEDITERRANEAN ELEVATION  
 DUPLEX CONFIGURATION 'A'

JOB NO.	VP-22-01
SHEET NO.	<b>A2.2.1A</b>
DATE	260401

**ARCHITEYK**  
 29222 DAKOTA DRIVE  
 VALENCIA CALIFORNIA 91354  
 949 939 1310  
 www.architeyk.com



REAR



SIDE

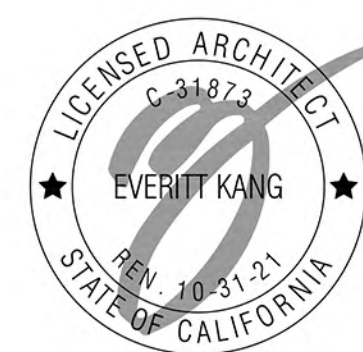


FRONT

COLOR SCHEME 4

0 4 8 12

ARCHITEYK



APPLICANT

PARK VIEW TRAILS, LLC

15550 MAIN STREET, SUITE C-11  
 HESPERIA, CA 92345  
 909.578.2119

PROJECT

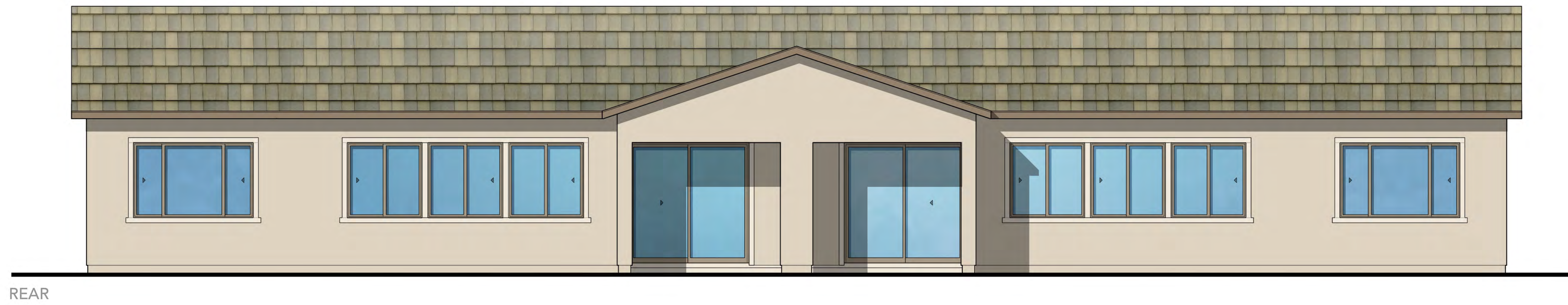
**PARK VIEW TRAILS**  
 TRACT 20581, HESPERIA, CALIFORNIA

DRAWINGS

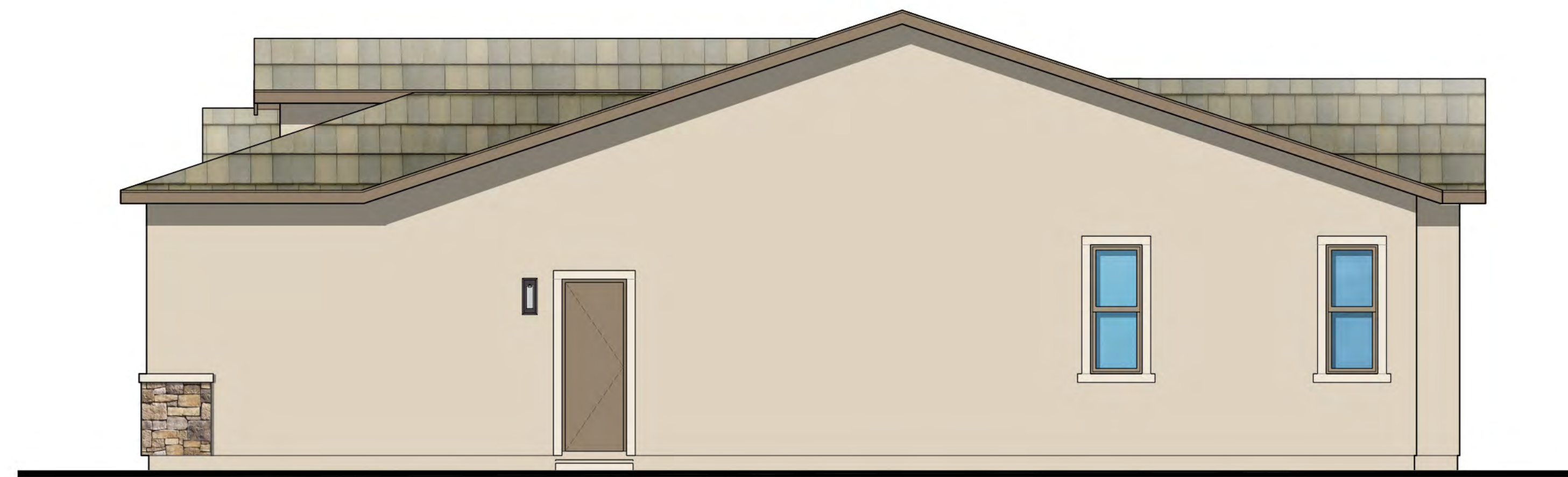
**PLAN TWO**  
 ITALIANATE ELEVATION  
 DUPLEX CONFIGURATION 'A'

JOB NO.	VP-22-01
SHEET NO.	<b>A2.2.2A</b>
DATE	260401





REAR



SIDE



FRONT

COLOR SCHEME 2

0 4 8 12

ARCHITEYK



29222 DAKOTA DRIVE  
VALENCIA CALIFORNIA 91354  
949 939 1310  
www.architeyk.com



APPLICANT  
**PARK VIEW TRAILS, LLC**  
15550 MAIN STREET, SUITE C-11  
HESPERIA, CA 92345  
909.578.2119

PROJECT

**PARK VIEW TRAILS**  
TRACT 20581, HESPERIA, CALIFORNIA

DRAWINGS

**PLAN TWO**  
MEDITERRANEAN ELEVATION  
DUPLEX CONFIGURATION 'B'

JOB NO.	VP-22-01
SHEET NO.	<b>A3.2.1A</b>
DATE	260401



REAR



SIDE



FRONT

COLOR SCHEME 1

0 4 8 12

ARCHITEYK



APPLICANT

PARK VIEW TRAILS, LLC

15550 MAIN STREET, SUITE C-11  
 HESPERIA, CA 92345  
 909.578.2119

PROJECT

**PARK VIEW TRAILS**  
 TRACT 20581, HESPERIA, CALIFORNIA

DRAWINGS

**PLAN TWO**  
 ITALIANATE ELEVATION  
 DUPLEX CONFIGURATION 'B'

JOB NO.	VP-22-01
SHEET NO.	<b>A3.2.2A</b>
DATE	260401







234







