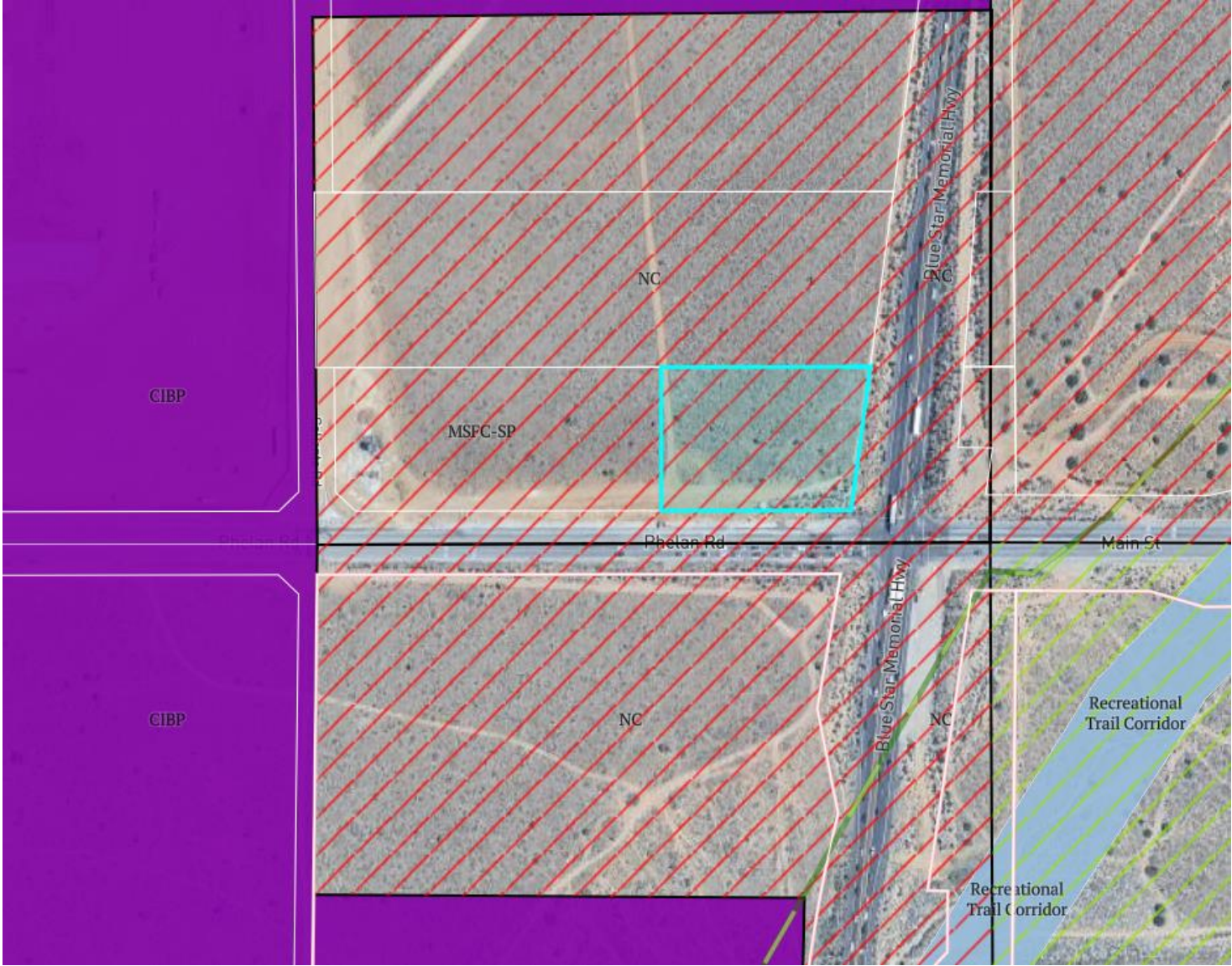


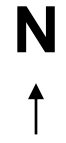
ATTACHMENT 5



APPLICANT(S): AUE ENERGY LLC	FILE NO(S): CUP24-00012
-------------------------------------	--------------------------------

LOCATION: NORTHWEST CORNER OF PHELAN ROAS AND HWY 395.	APN(S): 3064-401-10
---	----------------------------

PROPOSAL: CONSIDERATION OF A CONDITIONAL USE PERMIT, CUP24-00012 TO CONSTRUCT A 5,915 SQUARE FOOT CONVENIENCE STORE WITH OFF-SALE OF ALCOHOL ALONG WITH A 4,080 SQUARE FOOT FUELING STATION CANOPY WITH 10 PUMPS AND A 1,968 SQUARE FOOT DRIVE THRU CARWASH IN CONJUNCTION WITH ADOPTION OF A MITIGATED NEGATIVE DECLARATION PURSUANT TO THE PROVISIONS OF CEQA ON A 2.36 ACRE SITE WITHIN THE NEIGHBORHOOD COMMERCIAL (NC) ZONE OF THE MAIN STREET AND FREEWAY CORRIDOR SPECIFIC PLAN



GENERAL PLAN LANDUSE MAP