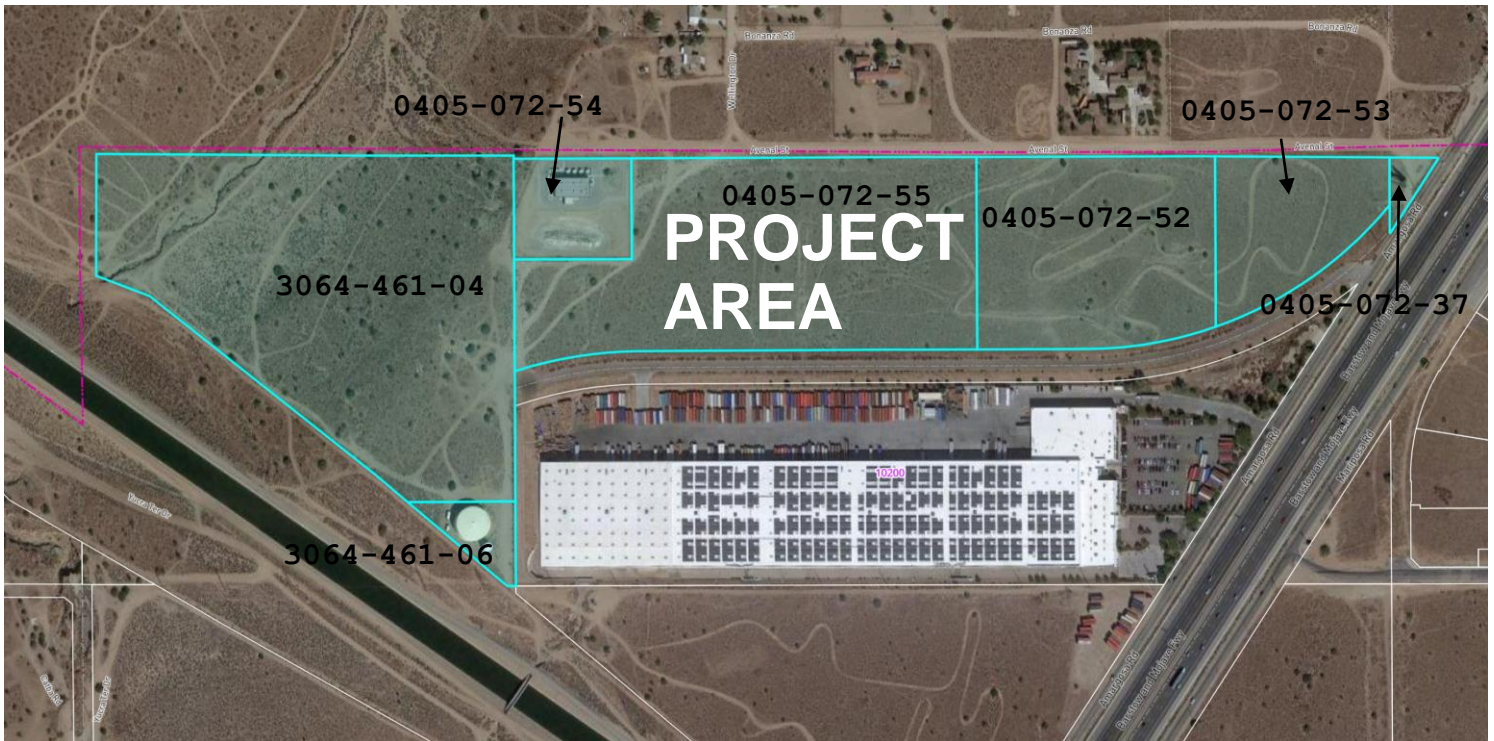


## ATTACHMENT 2



<b>APPLICANT:</b> RSC HESPERIA, LLC & CITY OF HESPERIA	<b>FILE NO:</b> SPLA21-00002
<b>LOCATION:</b> WEST OF AMARGOSA ROAD, NORTH OF THE CALIFORNIA AQUEDUCT, AND TO THE NORTH AND WEST OF PALMETTO WAY.	<b>APNs :</b> 3064-461-04, 06, 0405-072-37, 52 THRU 55
<b>PROPOSAL:</b> TO CHANGE APPROXIMATELY 55.5 GROSS ACRES FROM REGIONAL COMMERCIAL (RC) TO COMMERCIAL INDUSTRIAL BUSINESS PARK (CIBP) AND TO CHANGE APPROXIMATELY 3.5 ACRES FROM REGIONAL COMMERCIAL (RC) TO PUBLIC/INSTITUTIONAL OVERLAY (PIO)	

## AERIAL PHOTO