

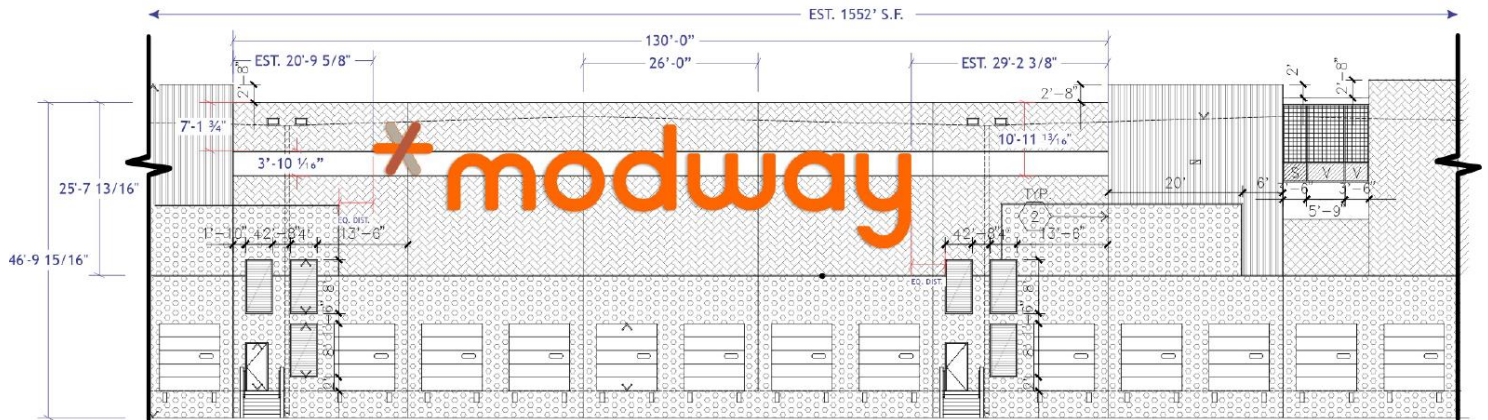
## EXHIBIT 1



**CURRENT CONDITION (EAST ELEVATION) PROPOSED SIGN 1499.7 SQ.FT.**



**CURRENT CONDITION (EAST ELEVATION) 150 SQ.FT.**



PROPOSED SIGN; EAST ELEVATION (PARTIAL)

SCALE;  $1/16^\circ = 1'-0''$

## PROPOSED MODWAY SIGNAGE