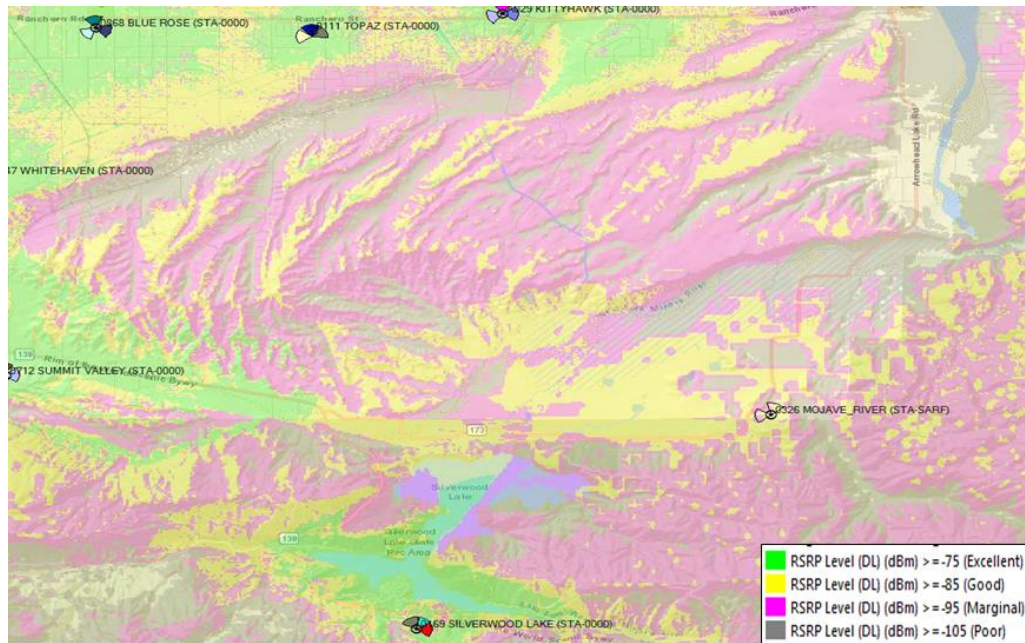
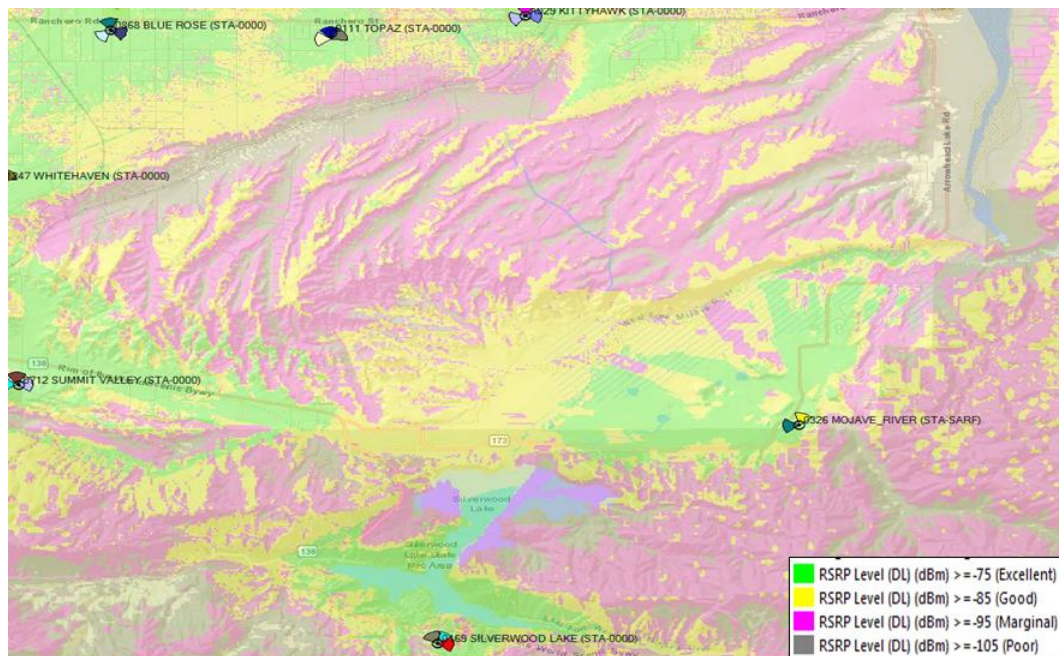


ATTACHMENT 4



Service without the facility



Service with the facility

APPLICANT(S):
VERIZON WIRELESS

FILE NO(S):
CUP17-00006

LOCATION:
APPROXIMATELY 600 FEET SOUTHEAST OF STATE HIGHWAY 173 IN THE SOUTHWEST QUARTER OF SECTION 26 WITHIN THE TAPESTRY SPECIFIC PLAN

APN(S):
0357-191-15

PROPOSAL:
A CONDITIONAL USE PERMIT TO CONSTRUCT A WIRELESS COMMUNICATIONS FACILITY WITH ANTENNAS INSTALLED 67 FEET HIGH ON AN EXISTING 113-FOOT SOUTHERN CALIFORNIA EDISON TOWER



SERVICE PLAN