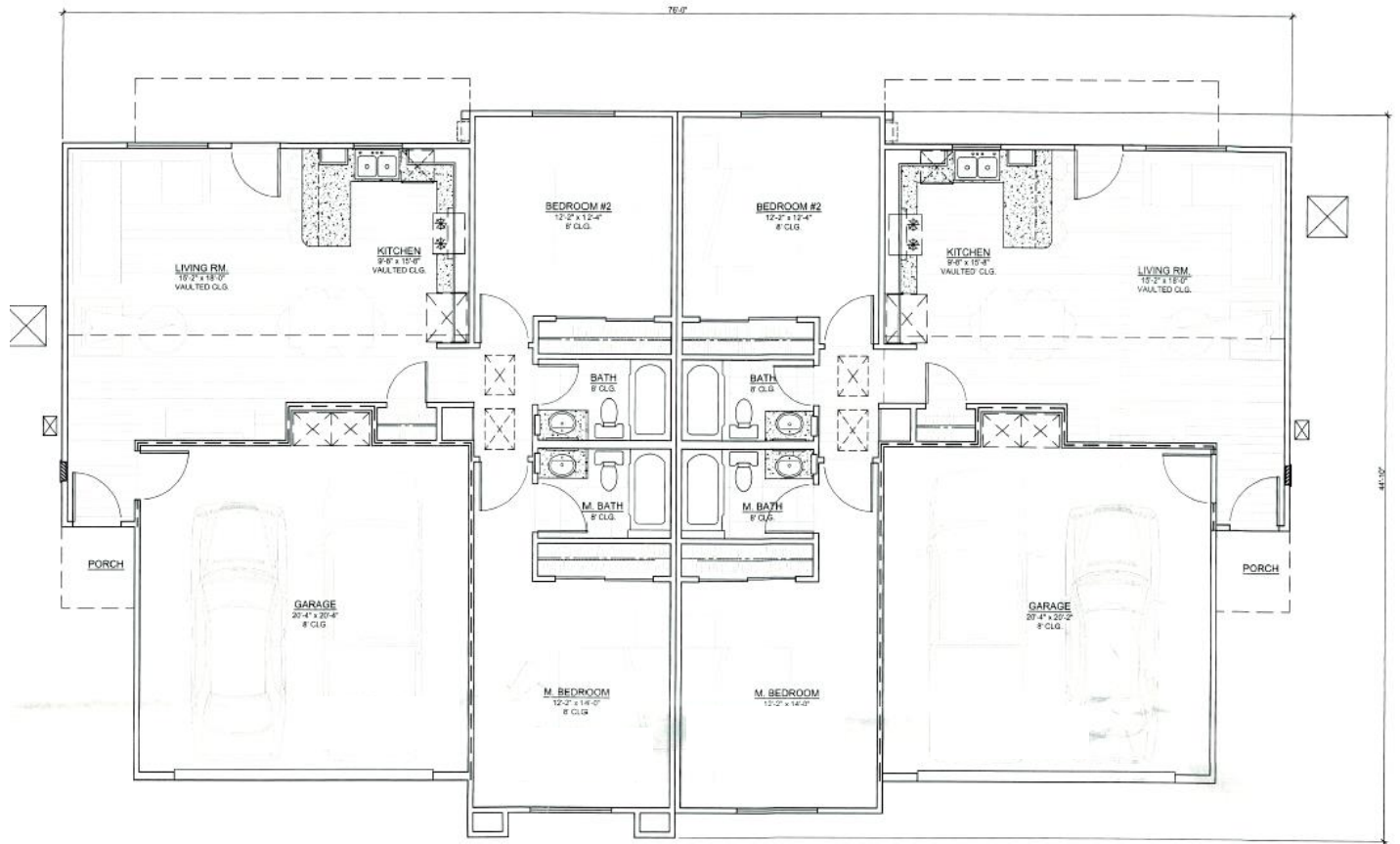


ATTACHMENT 4



DUPLEX FLOOR PLAN

SCALE: 1/4" = 1'-0"

APPLICANT(S):
9980 HESPERIA LLC

FILE NO(S): SPLA17-00004 &
SPR17-00016

LOCATION:
SOUTHWEST CORNER OF HESPERIA ROAD AND HERCULES STREET

APN(S):
0407-061-11

PROPOSAL:
A SPECIFIC PLAN AMENDMENT FROM NEIGHBORHOOD COMMERCIAL (NC) TO MEDIUM DENSITY RESIDENTIAL (MDR) ON 2.1 GROSS ACRES, AND A SITE PLAN REVIEW TO CONSTRUCT A 14-UNIT APARTMENT COMPLEX



FLOOR PLAN