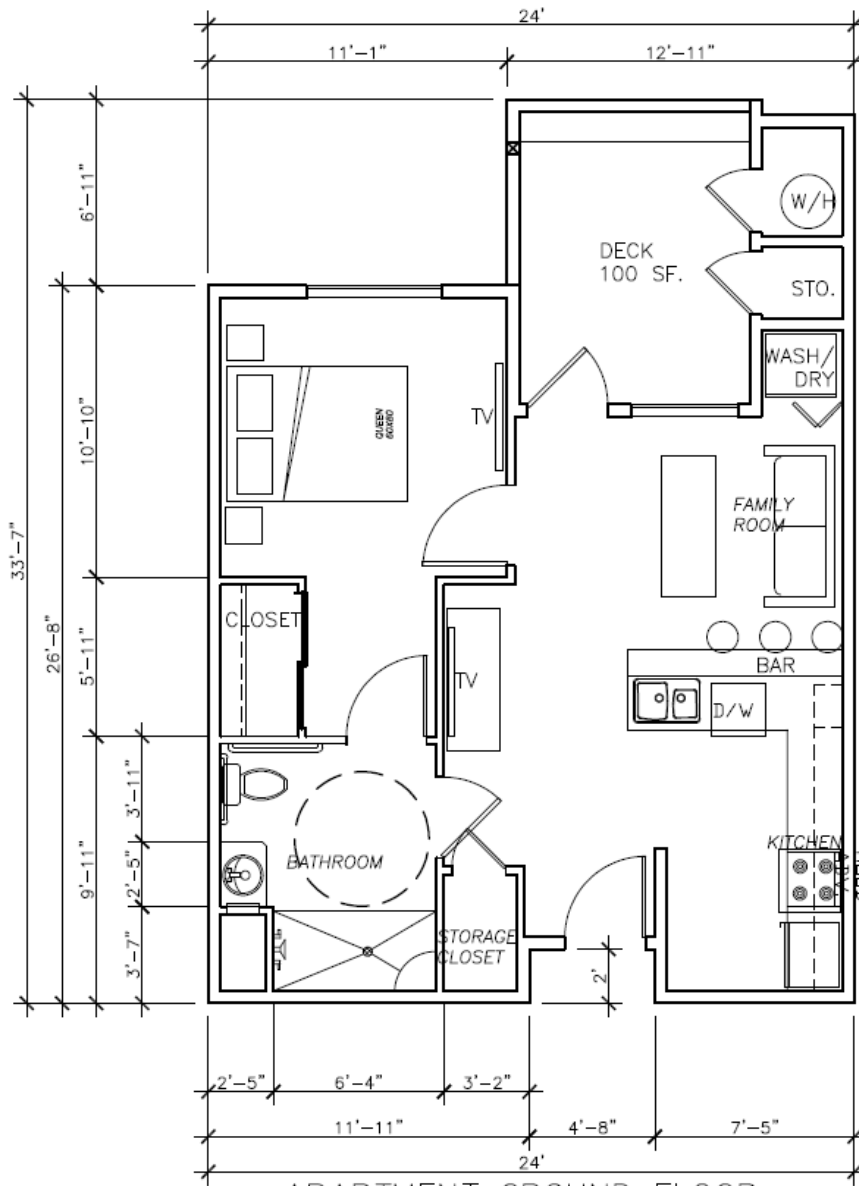


# ATTACHMENT 4



APARTMENT GROUND FLOOR  
 1-BEDROOM  
 618 SF.  
 100 SF. PATIO  
 C1BD 1

**APPLICANT(S):** AMERICANA HESPERIA RETIREMENT PROJECT, LLC

**FILE NO(S):** PPD18-00001, CUP18-00007, TPMN18-00002

**LOCATION:** ON THE NORTH SIDE OF MAIN STREET, APPROXIMATELY 250 FEET EAST OF THE CALIFORNIA AQUEDUCT

**APN(S):**  
 0405-062-56&70

**PROPOSAL:** Consideration of Planned Development PPD18-00001 and Conditional Use Permit CUP18-00007 to construct a two-story, 192 unit senior apartment development, a two-story, 192 unit senior assisted living facility, a 13,462 square foot commercial building, and a 14,820 square foot commercial building in conjunction with Tentative Parcel Map TPMN18-00002 to create 6 parcels on 22 gross acres within the PPD (15-00001) and the Medium Density Residential (MDR) zones of the Main Street and Freeway Corridor Specific Plan located on the north side of Main Street, approximately 250 feet east of the California Aqueduct

## 1BR SENIOR APARTMENT FLOOR PLANS