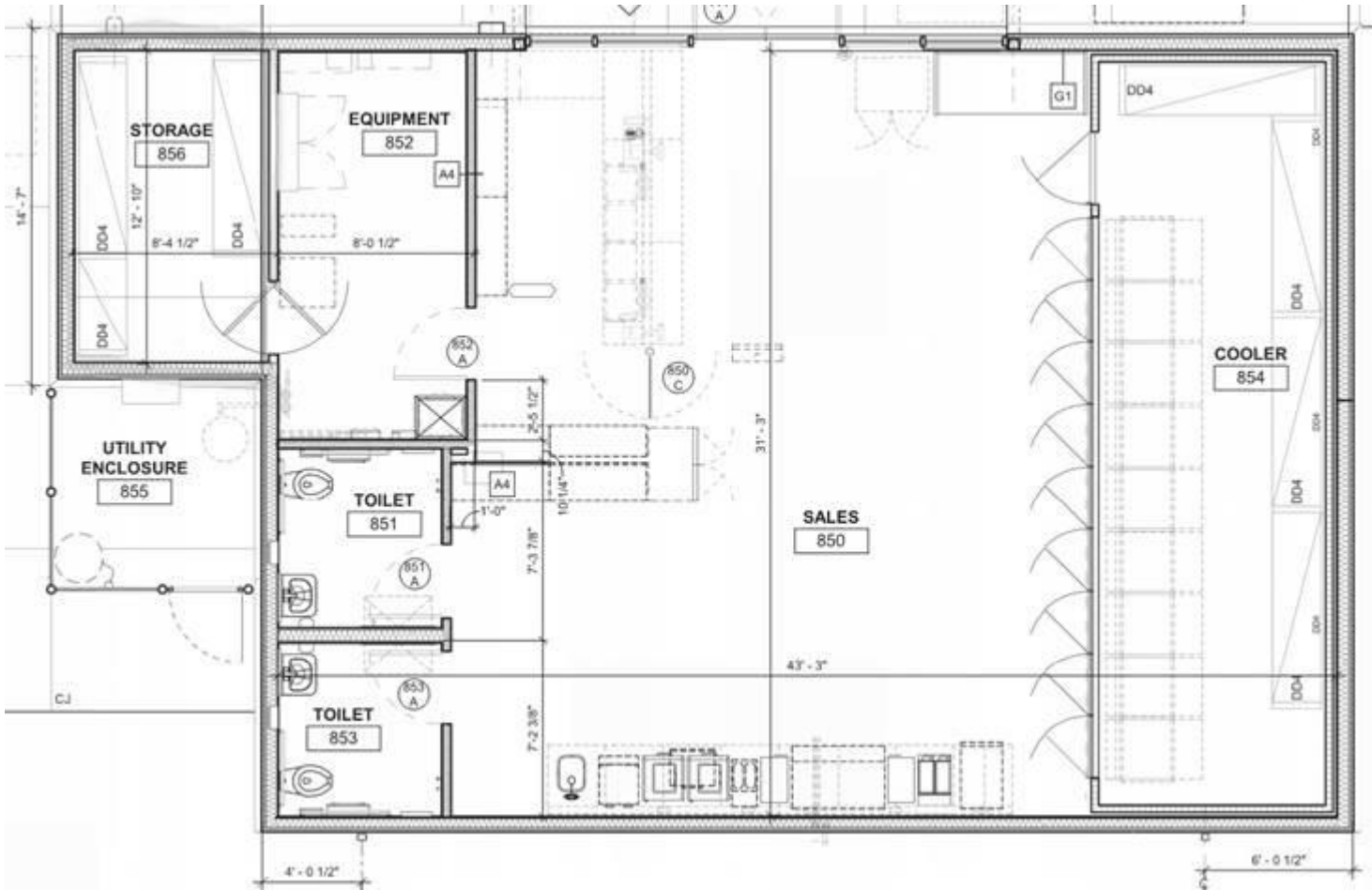


ATTACHMENT 4



APPLICANT(S): WALMART STORES, INC.

FILE NO(S): CUP19-00008

LOCATION: ON THE SOUTH SIDE OF MAIN STREET, APPROXIMATELY 375' WEST OF THE CALIFORNIA AQUEDUCT

APN(S):
3057-011-39 & 45

PROPOSAL: CONSIDERATION OF A CONDITIONAL USE PERMIT TO CONSTRUCT A 1,581 SQUARE FOOT CONVENIENCE STORE THAT INCLUDES THE SALE OF BEER AND WINE FOR OFF-SITE CONSUMPTION, AND A 4,860 SQUARE FOOT FUELING STATION WITH 6 FUEL ISLANDS ON APPROXIMATELY 1 GROSS ACRE WITHIN THE REGIONAL COMMERCIAL (RC) ZONE OF THE MAIN STREET AND FREEWAY CORRIDOR SPECIFIC PLAN



FLOOR PLAN